



SHAREHOLDER UPDATE

JULY 2017

KEY HIGHLIGHTS

- **Entitlement Offer completes to provide business development and general working capital**
- **Continued sales momentum in Australia and North America**
- **CCP being recognised in the market as a unified platform for managing critical control point information**

FROM THE CEO

I'm delighted with the shareholder response to our entitlement offer. The take-up was strong, with applications for shortfall far exceeding availability. The board made a decision to allocate shortfall to strategic investors. Our objective is to create a solid foundation for future growth. On the back of raising \$518,895 from sophisticated investors through a placement, the rights issue raised a further \$804,707 to provide CCP with business development and general working capital.

This month we're profiling several new customers. I'd particularly like to draw attention to the Excel Energy Center/Saint Paul River Centre in Minnesota. Our customer, Morrissey Hospitality Companies (MHS), manages all of the on-site food service outlets at the stadium and convention centre which cater for 1.7 million patrons every year. In addition, MHS has an extensive food service portfolio that includes sporting venues, hotels and restaurants across the mid-west.

Our team in the US continues to secure new customers and partners like MHS. For large customers, the CCP solution offers far more than a temperature monitoring solution. Whilst government regulation is a driver for the adoption of continuous wireless monitoring, automated compliance is just one feature of the CCP Solution. Multi-site food organisations are also seeking to enhance business efficiency through access to performance measures relating to key cost centres such as energy consumption and equipment maintenance. Our goal is to deliver a new standard of solution capability which supports our customers to meet their compliance obligations, improve business efficiency and protect their brand. In this update, I've included some additional information on CCP's platform to ensure shareholders understand the broader benefits we offer our customers.

I'm travelling to the US in July to progress a number of strategic opportunities. I look forward to updating you next month.

Once again, thank you for your continued support of CCP.

DID YOU KNOW?

The Internet of Things (IoT) has become the leading technology priority for digital transformation for 92 percent of organisations.

The Inmarsat research programme report, 'The Future of IoT in Enterprise 2017', surveyed 500 organisations (with over 1,000 employees) including various industries across the EMEA, the Americas and Asia-Pacific.

Almost all respondents are experiencing or expect to experience significant benefits from the deployment of IoT technologies.

CUSTOMER PROFILES - AUSTRALIA

IGA Express Southbank Adopts the CCP Solution

IGA pride themselves in being part of the local community by offering customers convenient local shopping. Stores are individually tailored in each location to suit the cultural diversity of our nation; and they support Aussie producers.



[Read More >>](#)

High Standards and High Expectations Match up with Denmark House and CCP

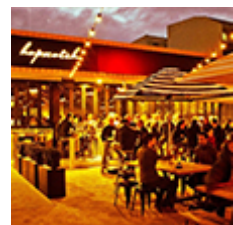
Like Australians, Danes enjoy a high standard of living and are enthusiastic adopters of new technologies which improve business efficiencies. The Executive Chef at [Denmark House](#), Bente Grysbaek, recognises these benefits and has implemented the CCP solution in this distinguished restaurant located in the heart of Melbourne CBD.



[Read More >>](#)

CCP Solution Adopted by the Latest Gastro Pub in Canberra - Hopscotch Bar & Grill

[Hopscotch Bar and Grill](#) is a new gastro pub in Braddon ACT. This fabulous new eatery is situated in a large warehouse in Braddon boasting an expansive beer garden, complete with an outdoor spit. Now a regular haunt for many, Hopscotch is already well known for great food and good times in Canberra North.



[Read More >>](#)

DID YOU KNOW?

The Ericsson Mobility Report June 2017 highlights that the number of connected IoT devices is growing fast.

Driven by an increasing range of use cases and business models, Ericsson forecast 29B connected devices by 2022.

The report suggests 15.5m short-range IoT devices (like CCP smart tags) will be deployed over the next 5 years.

CUSTOMER PROFILES - NORTH AMERICA

Excel Energy Centre/Saint Paul River Centre

CCP now monitors all the food venues in the [Xcel Energy Center arena](#). This arena houses the NHL Minnesota Wild hockey team, world renown performing artists and amazing dining venues with everything from a quick sandwich on the main floor to an intimate dining experience in the Jack Daniel's Old No. 7 Club on the RBC Wealth Management Club Level.



[Read More >>](#)

The Nova Restaurant Group Installs the CCP Solution in another of its Restaurants

Hazellewood Grill and Tap Room is now online. [Nova Restaurant Group, Inc](#) is a privately held restaurant management company headquartered in Minneapolis, Minnesota. They are synonymous with exquisite dining experiences in the Twin Cities Metro and Southeastern Minnesota regions.



[Read More >>](#)

BLOG

CCP: a unified platform for managing critical control points

It's very easy to pigeon-hole CCP as a temperature monitoring solution; however, it's important for shareholders to understand that there's much more to our story.

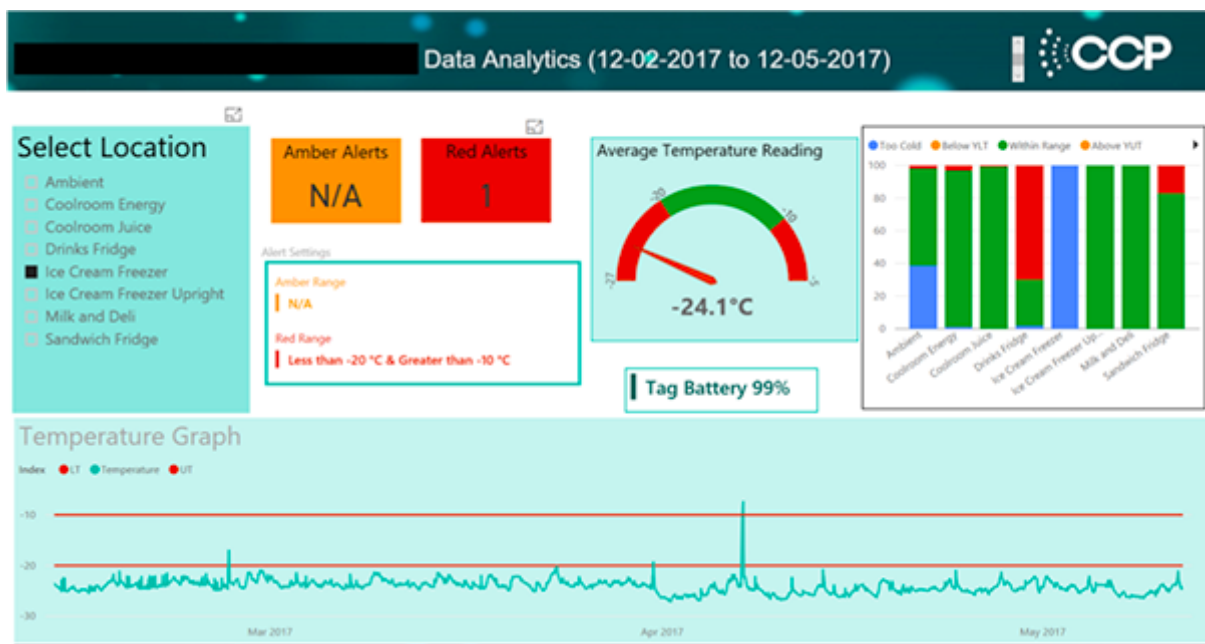
Using smart Internet-of-Things (IoT) sensors, CCP captures and then interprets data to provide information which supports better decision-making. As we gain more marketplace attention, more people are recognising the opportunity to use our

CRITICAL CONTROL POINTS ARE THE POINTS IN A SUPPLY CHAIN WHERE A FAILURE OF STANDARD OPERATING PROCEDURE HAS POTENTIAL TO CAUSE SERIOUS HARM TO PEOPLE - AND TO A BUSINESS' REPUTATION AND BOTTOM LINE. STANDARD CRITICAL CONTROL POINTS INCLUDE TEMPERATURE, ENERGY, ENVIRONMENT (E.G. AIR AND WATER QUALITY, PH, CHEMICALS, NOISE, ACOUSTICS AND GASES) AND MOVEMENT.

solution as a unified platform for managing critical control point information.

Big data analytics is revolutionising global supply chains. For example, as McKinsey & Company highlights, there's significant economic and social benefits associated with harnessing critical information in the food industry. Cutting post-harvest losses in half would produce enough food to feed a billion more people. Automated continuous critical control point monitoring systems offer the opportunity for reducing business risk, optimising equipment, maximising food shelf-life, quality and safety. With the right data capture approach, advanced analytics provide the information needed in supply chains for improved decision-making.

However, if disparate systems are used to capture and then interpret data, businesses can end up with so-called 'swivel-chair e-commerce'. At CCP, we will offer a unified platform with consistent front-end interfaces, common back-end services and a single highly-reliable and scalable cloud infrastructure. Our approach means faster deployments and better value for money.



Yes. Right now, we're focusing on selling our solution to monitor refrigeration temperature, humidity and movement (door open/close) in the food industry. In this market, there's a clear value proposition for using this critical control point information to improve food safety, reduce food waste and reduce business risk. For enterprise customers, it's even more attractive as we offer an interface for third-party services, which enables straightforward integration for pushing data to the CCP platform. Today, our business intelligence dashboard is providing customers with a very clear picture of improvement opportunities from a variety of data IoT sources. But stay tuned, because there's much more to come.

The innovation pathway we're on will strengthen CCP's solution to offer a unified platform which has application across many industries. We're already seeing interest from companies investigating the use of CCP for applications outside the food industry and temperature monitoring. Our solution is designed to monitor and analyse a range of critical control points. Our sensors are smart; and they're about to become a whole lot smarter (which we'll tell you about in next month's Shareholder Update). Furthermore, we are developing enhanced predictive modelling features within our software platform which become even more powerful over time with the addition of machine learning. As we set the innovation pathway to align with customer need, new capabilities will provide greater critical control point visibility and insights to improve contextual intelligence.

Of all the disruptive technologies, big data analytics is often quoted as the biggest. CCP is focused on three big data elements: capturing data, analysing data and transforming this data

into business intelligence. According to the Harvard Business Review in December 2016 most businesses were “nowhere close” to recognising the value analytics can bring. So it’s exciting for us to be engaging with some large organisations seeking to explore big data strategies and opportunities for using CCP as a unified platform solution.

FOLLOW US

CCP has made changes to its corporate website (www.ccp-technologies.com) to make operational announcements more accessible. A consolidated news feed displays business-related activity from Australia (au.ccp-network.com) and North America (us.ccp-network.com) websites together with ASX announcements. We'll be regularly posting customer news and case studies on our websites, and we also invite you to connect with us on social media, and ['Like Us' on Facebook](#):



Website - CCP Technologies Limited (ASX:CT1)



Website - CCP Network (please note: automatic AU/US redirection)



Facebook - CCP Technologies



Facebook - CCP Network Australia



Facebook - CCP North America



LinkedIn - CCP Technologies



LinkedIn - CCP Network Australia



Email
